



Richland, MI 49083

Tel: (269) 629-5000

Installation & Service Instructions
83-961-000

V12 Modular Lockout Valves

ISSUED: May, 2005
Supersedes: July, 2004

Doc.# 83961000, ECN# 050500, Rev. 3

⚠ WARNING

To avoid unpredictable system behavior that can cause personal injury and property damage:

- Disconnect electrical supply (when necessary) before installation, servicing, or conversion.
- Disconnect air supply and depressurize all air lines connected to this product before installation, servicing, or conversion.
- Operate within the manufacturer's specified pressure, temperature, and other conditions listed in these instructions.
- Medium must be moisture-free if ambient temperature is below freezing.
- Service according to procedures listed in these instructions.
- Installation, service, and conversion of these products must be performed by knowledgeable personnel who understand how pneumatic products are to be applied.
- After installation, servicing, or conversion, air and electrical supplies (when necessary) should be connected and the product tested for proper function and leakage. If audible leakage is present, or the product does not operate properly, do not put into use.
- Warnings and specifications on the product should not be covered by paint, etc. If masking is not possible, contact your local representative for replacement labels.

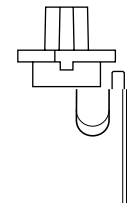
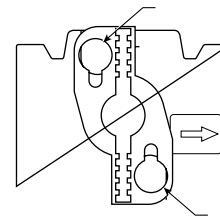
2. Install valve so that air flow is in the direction of arrow. Installation must be upstream from devices it is to service (e.g. lubricator, valve, cylinder, or tool), and mounted closely to these devices. Mounting may be in any position.
3. Installing a filter upstream of the valve (as close to the unit as possible) will provide added protection against rust, pipe scale, and other foreign matter.

Operation

⚠ CAUTION: Shackle size of lock must be 7.1mm (9/32 inch) in diameter or smaller.

Lockout Operation - With handle turned across the valve body the inlet port is blocked. Outlet port is open to exhaust. A padlock may be inserted through one of the two holes in the handle.

Normal Flow Operation - Turn handle to be in line with the body to open valve. Inlet port is open to supply downstream air.



Introduction:

Follow these instructions when installing, operating, or servicing the product.

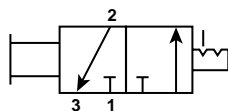
Application Limits

These products are intended for use in general purpose compressed air systems only and must not be subjected to conditions outside of the following ratings:

Operating Pressure:	kPa	PSIG	bar
Maximum Inlet Pressure:	1720	250	17.2
Ambient Temperature Range:	0°C to 80°C (32°F to 175°F)		

ANSI Symbol

- 1 - Inlet
- 2 - Outlet to System
- 3 - Exhaust



Lockout Valve - 2-Position; 3-Way

Installation

1. The valve should be installed with reasonable accessibility for service whenever possible. Keep pipe or tubing lengths to a minimum with inside clean and free of dirt and chips. Pipe joint compound should be used sparingly and applied only to the male pipe - never into the female port. Do not use PTFE tape to seal pipe joints - pieces have a tendency to break off and lodge inside the unit, possibly causing malfunction.

⚠ WARNING

FAILURE OR IMPROPER SELECTION OR IMPROPER USE OF THE PRODUCTS AND/OR SYSTEMS DESCRIBED HEREIN OR RELATED ITEMS CAN CAUSE DEATH, PERSONAL INJURY AND PROPERTY DAMAGE.

This document and other information from The Company, its subsidiaries and authorized distributors provide product and/or system options for further investigation by users having technical expertise. It is important that you analyze all aspects of your application, including consequences of any failure and review the information concerning the product or systems in the current product catalog. Due to the variety of operating conditions and applications for these products or systems, the user, through its own analysis and testing, is solely responsible for making the final selection of the products and systems and assuring that all performance, safety and warning requirements of the application are met.

The products described herein, including without limitation, product features, specifications, designs, availability and pricing, are subject to change by The Company and its subsidiaries at any time without notice.

EXTRA COPIES OF THESE INSTRUCTIONS ARE AVAILABLE FOR INCLUSION IN EQUIPMENT / MAINTENANCE MANUALS THAT UTILIZE THESE PRODUCTS. CONTACT YOUR LOCAL REPRESENTATIVE.

2 de la
eils à
reils.
n.
3 roche
ntaire
es.

F

avoir

Ve ps de
la tie est
ou denas
da

For vanne,
tou mission
est

Introduc

Suivre ces instructions pour l'installation, l'utilisation ou l'entretien de

Limites d

Ces produits sont utilisés dans les systèmes d'air comprimé à pression constante et ne doivent pas être soumis à des capacités suivantes :

Pression de	kPa	psi	bar
Pression d'	1720	250	17,2
Plage de te	°C à 80 °C (32 °F à 175 °F)		

Symbole

- 1 - Admissio
- 2 - Sortie ve
- 3 - Echappe

Va positions, 3 voies

Installati

1. Il faut ins un end-0.00:Fisnctaossibl'entrement.an

2. Instale las válvulas de manera que el flujo de aire ocurra en la dirección de las flechas. Se les debe instalar flujo arriba de los dispositivos a los que han de servir (p. ej. lubricador, válvula, cilindro, herramienta) y cerca a ellos. Se les puede montar en cualquier posición.
3. El instalar filtros flujo arriba de las válvulas (tan cerca a la unidad como sea posible) añada protección contra el moho, las escamas de las tuberías y otros materiales extraños.

Funcionamiento

PRECAUCIÓN: Las argollas de los desacopladores deben tener un diámetro máximo de 7,1 mm (9/32 pulgadas).

Funcionamiento de desacoplamiento - cuando la manija se encuentra atravesada sobre el cuerpo de la válvula, el puerto de entrada está desacoplado. El puerto de salida está abierto hacia el escape. Se puede colocar un candado en uno de los dos agujeros de la manija.

Funcionamiento de flujo normal - para abrir la válvula, gire la manija hasta que se encuentre alineada con el cuerpo. El puerto de entrada está abierto al aire de suministro flujo abajo.

Introducción:

Observe las siguientes instrucciones al instalar, operar o dar servicio al producto.

Límites de aplicación

Estos productos han sido diseñados para usarse solamente en sistemas de aire comprimido para propósitos generales y no se les debe someter a condiciones fuera de las siguientes magnitudes:

Presión de operación:	kPa	PSIG	barras
Presión de entrada máxima:	1720	250	17,2
Rango de temperatura ambiental: 0°C a 80°C (32°F a 175°F)			

Símbolos de ANSI

- 1 - Entrada
- 2 - Salida al sistema
- 3 - Escape



Válvula desacopladora, de 2 posiciones, 3 vías

Instalación

1. Siempre que sea posible, al instalar las válvulas se les debe colocar en lugares de fácil acceso, para poder darles servicio. Se deben usar tuberías o conductos tan cortos como sea posible, manteniendo su interior limpio y sin desechos o astillas. Los compuestos para unir tuberías deben usarse moderadamente y se les debe aplicar a las tuberías macho solamente, nunca a los puertos hembra. No use cinta PTFE para sellar las juntas de tuberías ya que algunas veces pedazos de cinta tienden a separarse y fijarse dentro de las unidades provocando posiblemente mal funcionamiento.